

# Impression Obsession – Grow Your Own Way

Technique: Zig simple watercolor

Level: Beginner/Intermediate



**TIME:** 10 minutes or less

**STAMPS:**

Impression Obsessions

Garden #E19945

Grow Your Own Way #19943

**INKS:**

VersaFine Onyx Black

Zig Markers:

81,84,44,48,42,33

22,23,20,27

50,52,60,65,63

**ACCESSORIES:**

Misti Stamping Tool

Water brush

Sparkletz embellishments – Aloha

Tim Holtz Tonic Guillotine Paper

Cutter

Foam Tape

Lawn Fawn Stamp Shammy

cleaner

**CARD STOCK AND DESIGNER PAPER:**

Simon Says Stamp Royal Purple cardstock

4-1/4 x 11, score and fold at 5-1/2 – card base

Tim Holtz Watercolor paper

3-3/4 x 5

**DIRECTIONS:**

1. Use the Misti stamp positioner and the VersaFine Onyx Black into to stamp the images onto the watercolor paper.
2. Use the Zig markers and a water brush to paint the image.
3. Attach the art piece to the card base with foam tape.
4. Embellish with the Aloha Sparkletz.
5. Clean Stamps with the Lawn Fawn Stamp Shammy

**Happy Stamping**





Here are the supplies used in today's Hero Arts Beautiful Day Agapanthus Card. Where available I use Compensated Affiliate Links, which means if you make a purchase through my link, I receive a small commission at no extra cost to you. Thank you so very much for your support, I truly appreciate it.



Impression Obsession Cling Stamp...

[ [SSS](#) ]



Impression Obsession Cling Stamp GROW...

[ [SSS](#) ]



Tsukineko VersaFine ONYX BLACK Ink...

[ [SSS](#) ]



Zig CLEAN COLOR 36 SET Real Brush...

[ [SSS](#) ]



Zig CLEAN COLOR 48 SET Real Brush...

[ [SSS](#) ]



Ranger Inkssentials WHITE OPAQUE PEN...

[ [SSS](#) ]





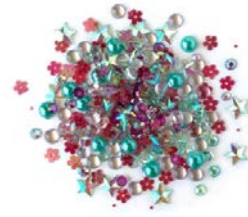
**Ranger WATERCOLOR PAPER**  
Inkssentials...

[ [SSS](#) ]



**Simon Says Stamp BIG**  
**MOMMA FOAM TAPE...**

[ [SSS](#) ]



**Buttons Galore and More**  
**Sparkletz...**

[ [SSS](#) ]



**Simon Says Stamp Card**  
**Stock 100#...**

[ [SSS](#) ]



**MINI MISTI PRECISION**  
**STAMPER Stamping...**

[ [SSS](#) ]



**MISTI PRECISION STAMPER**  
**Stamping Tool...**

[ [SSS](#) ]

