

Tim Holtz – Crazy Birds Water colored

Technique: simple water coloring

Level: beginner/Intermediate



TIME: 30 minutes or less

STAMPS:

Tim Holtz – Crazy Birds

INKS:

VersaFine Onyx Black
Gansai Tambi watercolors
VersaMark

ACCESSORIES:

Misti Precision Stamping platform
Gemini Jr Die Cutting Machine
#661190 Wildflowers dies
Heat Tool
Ranger Anti-static pouch

Tombow Xtreme tape runner or
Watercolor Brush
Score Pal Mini
Tim Holtz Guillotine Paper Cutter
Lawn Fawn Shammy or Absorber stamp cleaning tools

1/4" Scor Tape
Tombow Multi-Purpose Glue
Simon Says Stamp Teflon Bone Folder
Simon Says Big Momma Foam Tape

CARD STOCK AND DESIGNER PAPER:

Neenah 110# Solar White card stock
Simon Says Stamp black card stock

5-1/2 x 8-1/2 score and fold at 4-1/4 – card base
3-7/8 x 5-1/8 – mat for card front
3/4 x 4-1/2 – heat emboss sentiment
Scrap to die cut background flower
3-3/4 x 5 – card front
3 x 5 – stamp, paint and cut out birds.

Ranger watercolor paper
Canson 90# watercolor paper

DIRECTIONS:

1. Use the Misti to stamp all three of the birds with the VersaFine Onyx Black Ink.
2. Use the Gansai Tambi watercolor paints to color the birds.
3. When the birds are dry, place them back into the Misti and stamp them again to refresh the lines.
4. Use the coordinating dies to die cut the birds out.
5. Die cut one of the silhouette flower stems with the scrap of black cardstock.



6. Watercolor the card front and let dry.
7. Use ¼" Scor Tape to attach the dry card front to the mat.
TIP – this watercolor paper is very thick, so you need a strong adhesive to hold it flat to the mat.
8. Add foam tape to the back and then attach it to the card base.
9. Use the Tombow Multi-purpose glue to attach the flower silhouette over on the left side.
10. White Heat emboss the sentiment onto the remaining black piece of card stock and attach to the card front.
11. Use Foam Tape to attach the birds.
12. Clean stamps with the shammy.

Happy Stamping



Here are the supplies used. Where available I use **Compensated Affiliate Links**, which means if you make a purchase through my link, I receive a small commission at no extra cost to you. Thank you so very much for your support, I truly appreciate it.



Tim Holtz Cling Rubber Stamps MINI...

[[SSS](#)]



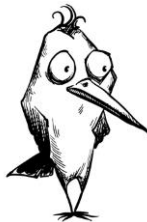
Tim Holtz Sizzix MINI BIRD CRAZY AND...

[[SSS](#)]



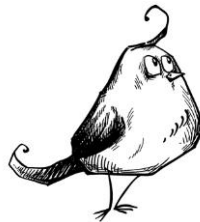
Tim Holtz Sizzix Framelits BIRD CRAZY...

[[SSS](#)]



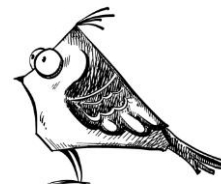
Tim Holtz Rubber Stamp CRAZY BIRD 2...

[[SSS](#)]



Tim Holtz Rubber Stamp CRAZY BIRD 4...

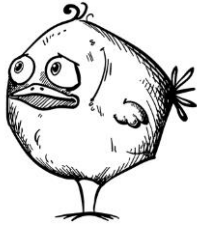
[[SSS](#)]



Tim Holtz Rubber Stamp CRAZY BIRD 6...

[[SSS](#)]





**Tim Holtz Rubber Stamp
CRAZY BIRD 3...**

[[SSS](#)]



**Tim Holtz Rubber Stamp
CRAZY BIRD 1...**

[[SSS](#)]



**Tim Holtz Cling Rubber Stamps
BIRD...**

[[SSS](#)]



**Tim Holtz Rubber Stamp
CRAZY BIRD 5...**

[[SSS](#)]



**Tim Holtz Sizzix
WILDFLOWERS Thinlits...**

[[SSS](#)]



**Tsukineko VersaFine ONYX
BLACK Ink...**

[[SSS](#)]



**Zig Kuretaka Gansai Tambi
48 COLOR...**

[[SSS](#)]



**Zig Kuretaka Gansai Tambi
36 COLOR SET**

[[SSS](#)]



**Zig Kuretaka Gansai Tambi 24
COLOR SET**

[[SSS](#)]



**Zig Kuretaka Gansai Tambi
18 COLOR SET**

[[SSS](#)]



**Neenah Classic Crest 110
LB SMOOTH...**

[[SSS](#)]



**Simon Says Stamp Card Stock
100#...**

[[SSS](#)]





Ranger WATERCOLOR PAPER Inkssentials...

[[SSS](#)]



Canson XL WATERCOLOR PAPER 9x12 140lb...

[[SSS](#)]



Crafter's Companion GEMINI JUNIOR...

[[SSS](#)]



Crafter's Companion MAGNETIC TWEEZERS...

[[SSS](#)]



Tim Holtz Tonic CRAFT PICK...

[[SSS](#)]



We R Memory Keepers QUICKSTIK...

[[SSS](#)]



Tool Basics FLUSH CUTTERS 4463

[[SSS](#)]



Tsukineko Versamark EMBOSS INK PAD...

[[SSS](#)]



Simon Says Stamp EMBOSSING POWDER...

[[SSS](#)]



Precision Heat Embossing Tool Hero...

[[SSS](#)]



Ranger ANTI STATIC POUCH ink62332

[[SSS](#)]



Tim Holtz Tonic GUILLOTINE COMFORT...

[[SSS](#)]





Tim Holtz Tonic Craft MINI SNIPS...

[[SSS](#)]



Tim Holtz Tonic Craft SCISSORS Micro...

[[SSS](#)]



Scor-Pal MINI SCOR-BUDDY Scoring...

[[SSS](#)]



Hero Arts Rubber Stamp SMALL BLOCK...

[[SSS](#)]



MISTI PRECISION STAMPER Stamping Tool...

[[SSS](#)]



MISTI MEMORY MISTI PRECISION STAMPER...

[[SSS](#)]



MISTI MOUSE PAD INSERT 000144

[[SSS](#)]



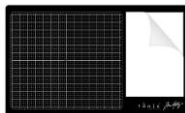
MISTI CREATIVE CORNERS Positioning...

[[SSS](#)]



Novus PLASTIC CLEAN AND SHINE 1 MISTI...

[[SSS](#)]



Tim Holtz Tonic GLASS MEDIA MAT 1914e

[[SSS](#)]



Simon Says Stamp SMALL TEFLON BONE...

[[SSS](#)]



Lawn Fawn STAMP SHAMMY Cleaner LF1045

[[SSS](#)]





**RESERVE Waffle Flower
WATER MEDIA MAT...**

[[SSS](#)]

