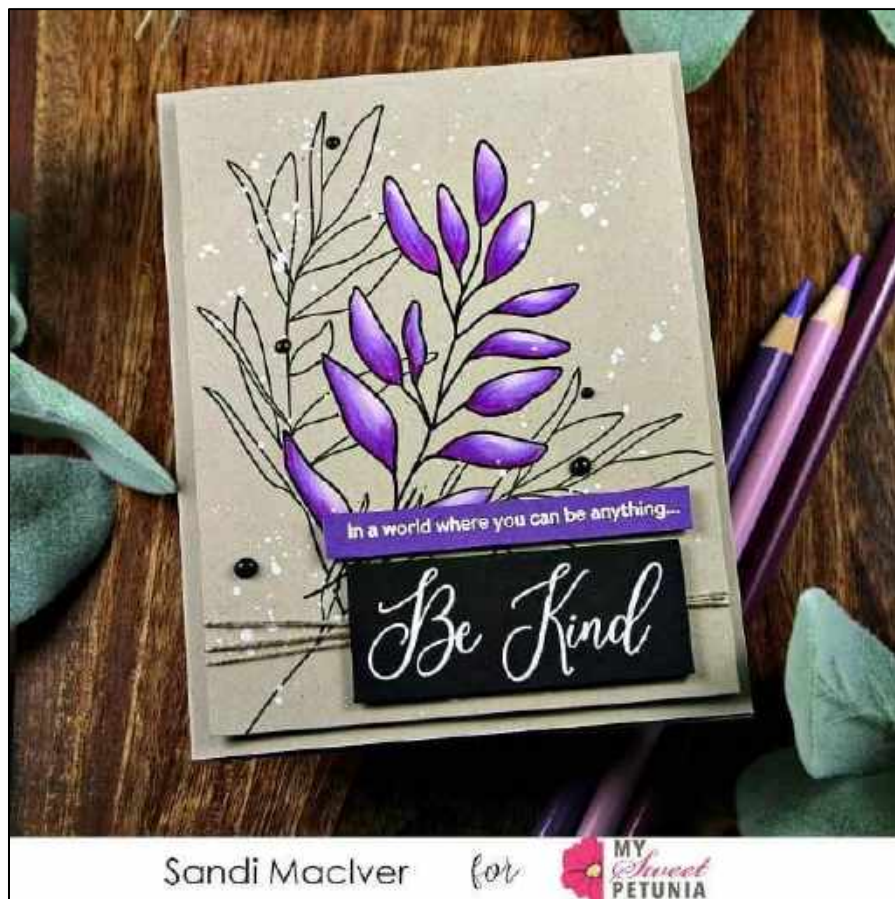


SIMON SAYS STAMP – Be Kind

Technique: Colored Pencils/heat embossing/Misti Stamping

Level: Beginner/Intermediate



TIME: around 30 minutes

STAMPS:

Simon Says Stamp Be Kind

INKS:

VersaMark Embossing Ink
Gina K Amalgam Black

Prisma Colored Pencils:

White,
Lavender,
Lilac,
Parma Violet,
Dahlia Purple.

ACCESSORIES:

Gemini Jr. Die Cutting Machine
Simon Says Stamp Be Kind Dies
Heat Tool
Ranger anti-static pouch
Simon Says Stamp Black and
White embossing powder
White Winsor & Newton Gouache

Nuvo Crystal Drops – Ebony black
Simon Says Stamp Foam Tape
Tim Holtz Guillotine Paper Cutter
Score Pal Mini
Silicone Bone Folder

Misti Stamping Tool
Burlap Twine
Tim Holtz scissors
Post It Note
Picket Fence, Stamp Scrubber

CARD STOCK AND DESIGNER PAPER:

Neenah Desert Storm

Simon Says Stamp Black
Simon Says Stamp Royal Purple

5-1/2 x 8-1/2 score and fold at 4-1/4 – card base
4 x 5-1/4 – card front.

1 x 2-1/2 – large sentiment

1/2 x 3 – small sentiment, trim down after embossing



DIRECTIONS:

1. Place the card front into the Misti and lightly stamp the leaf image in black.
TIP – DO NOT take the stamp off the Misti – you will be stamping again .
2. Use the colored pencils to color the image.
TIP – coloring before you emboss allows you to color right out to the edge of the image without the halo you get from coloring after you emboss.
3. Place the card front back into the Misti. This time ink the stamp in VersaMark Ink and Black heat emboss over the image. This adds great outline and detail over the edge of your work and really makes it pop.
4. Place one of the other stamps in the set into the Misti and stamp in black ink for a little “background noise”.
5. Take the card front out of the Misti, lay it on a protected work surface and splatter it with diluted White Winsor & Newton Gouache. Then add 5 drops with Nuvo Crystal Drops in Ebony Black.
6. While the card front is drying, place the small black cardstock into the Misti, stamp the sentiment in VersaMark Ink and white Heat emboss it.
7. Repeat with the purple card stock and the smaller sentiment.
8. Wrap the Burlap Twine around the dried card front three times. Tying the knot where the sentiment will cover it.
9. Add foam tape to the back of both sentiments and attach them to the card front.
10. Add foam tape to the back of the card front and attach it to the card base.
11. Clean the stamp with the stamp scrubber.

Happy Stamping



Here are the supplies used. Where available I use **Compensated Affiliate Links**, which means if you make a purchase through my link, I receive a small commission at no extra cost to you. Thank you so very much for your support, I truly appreciate it.



Simon Says Clear Stamps BE
KIND...

[[SSS](#)]



Simon Says Stamp BE KIND
Wafer Dies...

[[SSS](#)]



Simon Says Stamps And
Dies BE KIND...

[[SSS](#)]





MINI MISTI PRECISION STAMPER Stamping...

[[SSS](#) | [MSP](#)]



MISTI PRECISION STAMPER Stamping Tool...

[[SSS](#) | [MSP](#)]



Prismacolor PREMIER COLORED PENCILS...

[[SSS](#)]



Prismacolor 150 PREMIER COLORED...

[[SSS](#)]



Tsukineko VersaMark EMBOSS INK PAD...

[[SSS](#)]



Simon Says Stamp EMBOSSING POWDER...

[[SSS](#)]



NEW 2020 Wagner Precision Heat Tool...

[[SSS](#)]



Ranger ANTI STATIC POUCH ink62332

[[SSS](#)]



Simon Says Stamp Embossing Powder...

[[SSS](#)]



Gina K Designs JET BLACK AMALGAM Ink...

[[SSS](#)]



Neenah Environment 100 LB SMOOTH...

[[SSS](#)]



Simon Says Stamp Card Stock 100#...

[[SSS](#)]





**Simon Says Stamp Card
Stock 100#...**

[[SSS](#)]



**May Arts NATURAL Twine
String Burlap...**

[[SSS](#)]



**Tonic EBONY BLACK Nuvo
Crystal Drops...**

[[SSS](#)]



**Winsor Newton
PERMANENT WHITE 14ml...**

[[SSS](#)]



**Simon Says Stamp BIG
MOMMA FOAM TAPE...**

[[SSS](#)]



**3M Scotch DOUBLE-SIDED
FOAM TAPE...**

[[SSS](#)]

