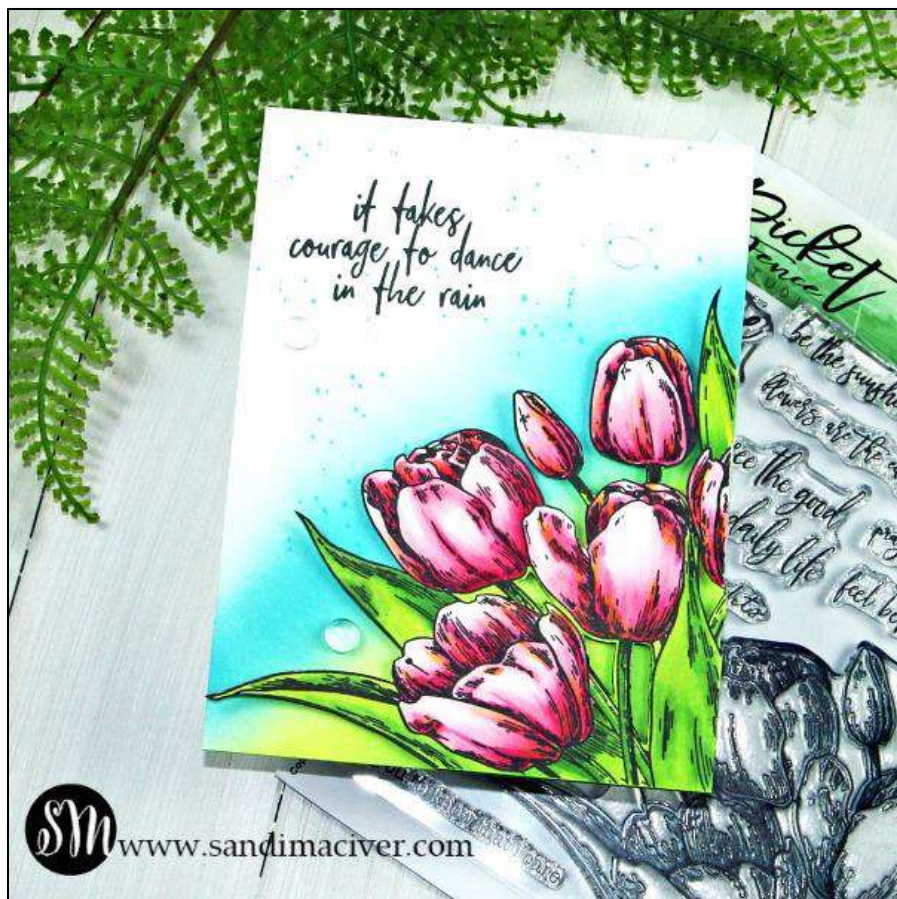


# Picket Fence – Early Tulip Bouquet

Technique: Copic Markers

Level: Beginner/Intermediate



**TIME:** around 30minutes

**STAMPS:**

Picket Fence – Early Tulip Bouquet

**INKS:**

Gina K Designs Amalgam Ink

**COPIC MARKERS:**

Pinks: RV13, RV14, RV19, RV81

Green: YG03, YG17, YG67

**Distress Oxides:**

Broken China

Twisted Citron

Mowed Lawn

**ACCESSORIES:**

Misti Stamping Tool

Ranger Mini Ink Blending Tool

Scissors

Tim Holtz Guillotine Paper Cutter

Foam Tape

Tombow Multi-purpose white glue

Craft tweezers

Buttons Galore & More Saltwater embellishments

Picket Fence Stamp Scrubber

**CARD STOCK AND DESIGNER PAPER:**

SSS Thick White

4-1/4 x 11, score and fold at 5-1/2 – card base

Neenah Solar White 80#

4-1/4 x 5-1/2 – stamp, color and cut out tulips

**DIRECTIONS:**

1. Use the Misti Stamping Tool to stamp the tulip image in the black ink onto the Neenah Solar White card stock.
2. Color the image using the copic markers.
3. Cut out the image and set aside.



4. Use the Blending Tools to add the Distress Oxides to the bottom half of the card front on an angle starting in the bottom right with the darkest color.
5. When the ink is dry. Stamp the blue ink onto an acrylic handle. Spritz it with water until it's runny, pick some up with a paint brush and splatter the white portion of the card base.
6. When the card base is completely dry, place it back into the Misti and stamp the sentiment.
7. Use foam tape to attach the tulip piece in the bottom right corner.
8. Add three of the "rain drops" from the Buttons Galore & More Saltwater embellishments.
9. Clean the stamps with the stamp scrubber.

## Happy Stamping

