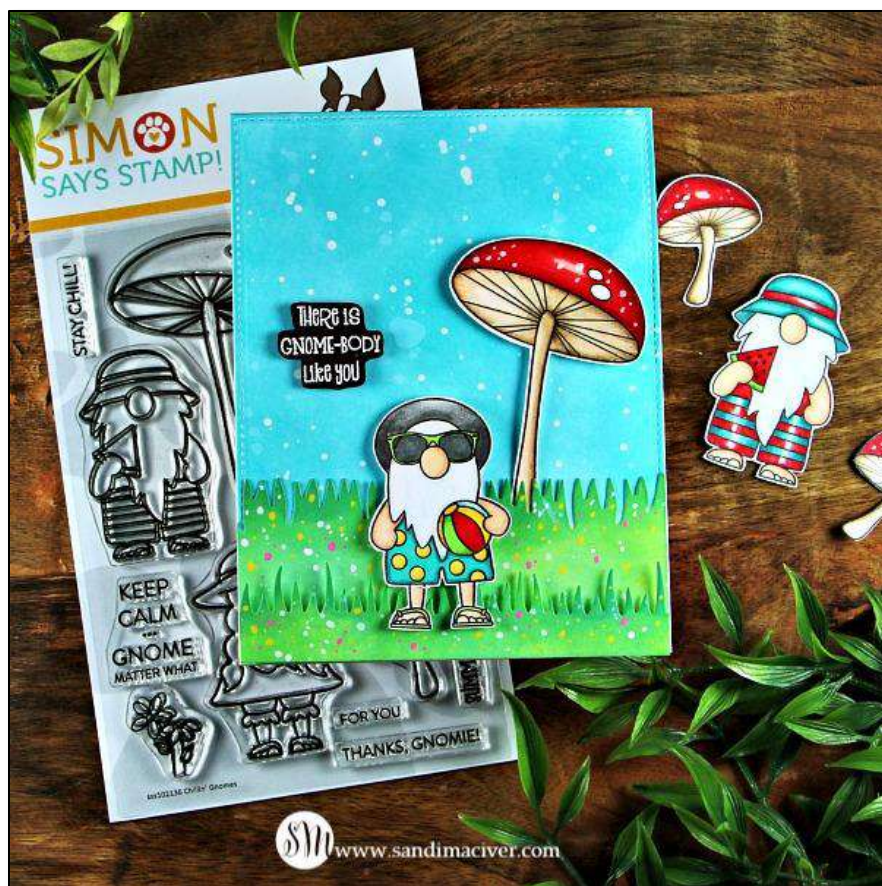


Simon Says Stamp – Chillin Gnomes

Technique: Copics/ Ink Blending

Level: Beginner/Intermediate



TIME: around 30 - 40minutes
Plus 30 minutes drying time

STAMPS:

Simon Says Stamp Chillin Gnomes

INKS:

Gina K Amalgam (for Copics)
Distress Oxide Inks:
Peacock Feathers, Tumbled Glass,
Mowed Lawn, Cracked Pistachio,
Pine Needles

Copic Markers:

Red: R11, R24, R27, R29, R39
Green: YG05, YG67
Shorts: BG11, BG13, BG18 and
Yellow Y15
Hat: T1, T4, T5, T6
Skin: E51, E53, E13
Underside of Mushroom:
E50, E53, E31, E43, E57
Sunglasses: T6

ACCESSORIES:

Spellbinders Platinum 6 Die Cutting Machine
Simon Says Stamp Grassy Edges dies
Anti Static pouch
White Gouache (white Paint)
Tombow Tape Runner
Foam squares
Tim Holtz scissors
Tonic Light Mist Spray Bottle
Silicone Bone Folder
Misti Stamping Tool

Stitched Rectangle Wafer Dies
Heat Tool
Simon Says Stamp White Embossing Powder
Paint brush
Tombow Multipurpose White Glue
Tonic Paper Cutter
Score Pal Mini
Paint Pens – Yellow and Pink
Blending Brushes
Absorber shammy

CARD STOCK AND DESIGNER PAPER:

Neenah Solar White #110
Hammermill 100# Pure White

4-1/4 x 11, score and fold at 5-1/2 – Card Base
4-1/4 x 5-1/2 – card front die cut with stitched rectangles
4-1/4 x 5-1/2 – for the grass



DIRECTIONS:

1. Die cut the card front with the stitched rectangle die.
2. Use the blending tools to add the Peacock Feathers and Tumbled Glass ink all over the card front
3. Splatter with water, dab up with a paper towel and then splatter with white paint – set aside to dry.
4. Use the blending tools to add the greens to the second piece of white, die cut two pieces of grass.
5. Lay on the work surface blend on a bit of Pine Needles ink to the tips to make them darker.
6. Splatter with white paint and let dry.
7. Add different sized dots with the yellow and pink paint pen.
8. Use the Misti Stamping Tool to stamp the images onto the final piece of white card.
9. Use the Copics to color the images and then cut them out.
10. Attach the card front to the card base.
11. Attach the large piece of grass to the bottom front of the card
12. Use foam squares to attach the small piece of grass along the bottom of the card
13. Use foam squares to attach the mushroom and the gnome
14. Clean the stamps with the shammy.

Happy Stamping



Here are the supplies used. Where available I use Compensated Affiliate Links, which means if you make a purchase through my link, I receive a small commission at no extra cost to you. Thank you so very much for your support, I truly appreciate it.



Simon Says Stamps and
Dies CHILLIN...



Simon Says Stamp
STITCHED



Simon Says Stamp GRASSY
EDGES Wafer...



[[SSS](#)]

RECTANGLES...

[[SSS](#)]

[[SSS](#)]



Tim Holtz Distress Oxide
Ink Pad...

[[SSS](#)]



Tim Holtz Distress
Oxide Ink Pad...

[[SSS](#)]



Tim Holtz Distress Oxide Ink
Pad...

[[SSS](#)]



Tim Holtz Distress Oxide
Ink Pad...

[[SSS](#)]



Tim Holtz Distress
Oxide Ink Pad PINE...

[[SSS](#)]



Copic SKETCH 72 PC SET C
Markers...

[[SSS](#)]



GRAPH'IT SHAKE Marker
Fine 5125 -...

[[MRK](#)]



GRAPH'IT SHAKE
Marker Fine 1170 -...

[[MRK](#)]



Neenah Classic Crest 110 LB
SMOOTH...

[[SSS](#)]



Neenah Classic Crest 80 LB
SMOOTH...



Tim Holtz Tonic
GUILLOTINE



Tim Holtz Tonic Craft MINI
SNIPS...



[[SSS](#)]

COMFORT...

[[SSS](#)]

[[SSS](#)]



**EK Success CRAFT
TWEEZERS Precision...**

[[SSS](#)]



**Scor-Pal MINI SCOR-
BUDDY Scoring...**

[[SSS](#)]



**MISTI PRECISION STAMPER
Stamping Tool...**

[[SSS](#)]



**Tonic EASY CLEAN MAT
1514E**

[[SSS](#)]



**Tim Holtz Tonic GLASS
MEDIA MAT 1914e**

[[SSS](#)]



**Simon Says Stamp SMALL
TEFLON BONE...**

[[SSS](#)]



**The AQUA Absorber Towel
17 x 27...**

[[SSS](#)]



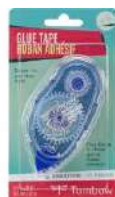
**Tombow MONO MULTI
Liquid Glue Two...**

[[SSS](#)]



**Simon Says Stamp BIG
MOMMA FOAM TAPE...**

[[SSS](#)]



**Tombow MONO Adhesive
PERMANENT Tape...**



**Tombow MONO
Adhesive Tape**



**Scrapbook Adhesives 3D
217 WHITE FOAM...**



[[SSS](#)]

Dispenser...

[[SSS](#)]

[[SSS](#)]



**Tsukineko VersaMark
EMBOSS INK PAD...**

[[SSS](#)]



**Simon Says Stamp
EMBOSSING POWDER...**

[[SSS](#)]



**NEW 2020 Wagner Precision
Heat Tool...**

[[SSS](#)]



**Ranger ANTI STATIC
POUCH ink62332**

[[SSS](#)]



**Sistema KLIP IT 3
Containers Clear...**

[[SSS](#)]

